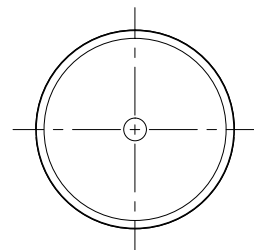
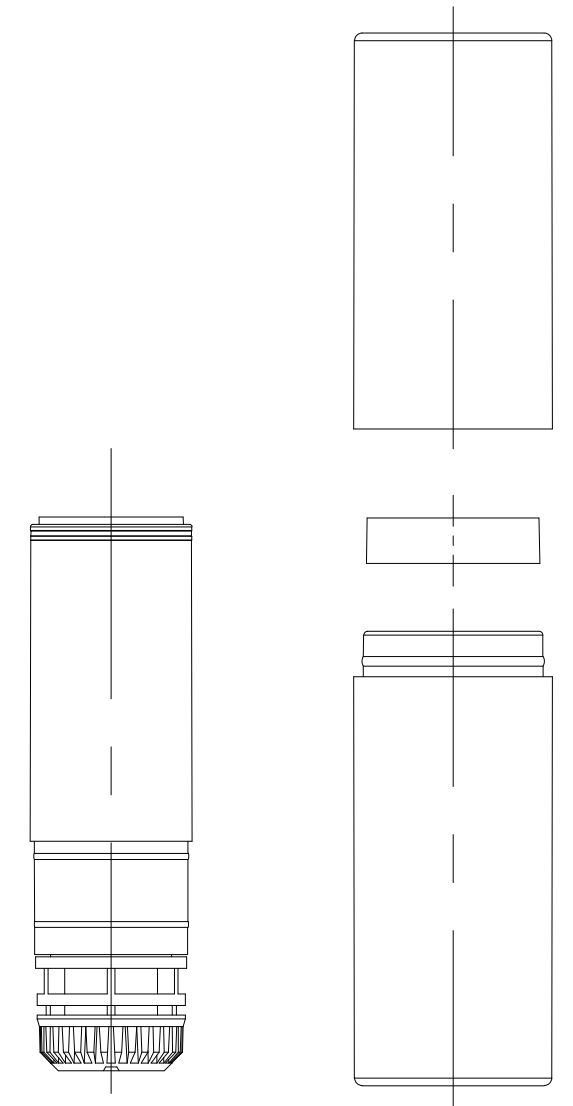
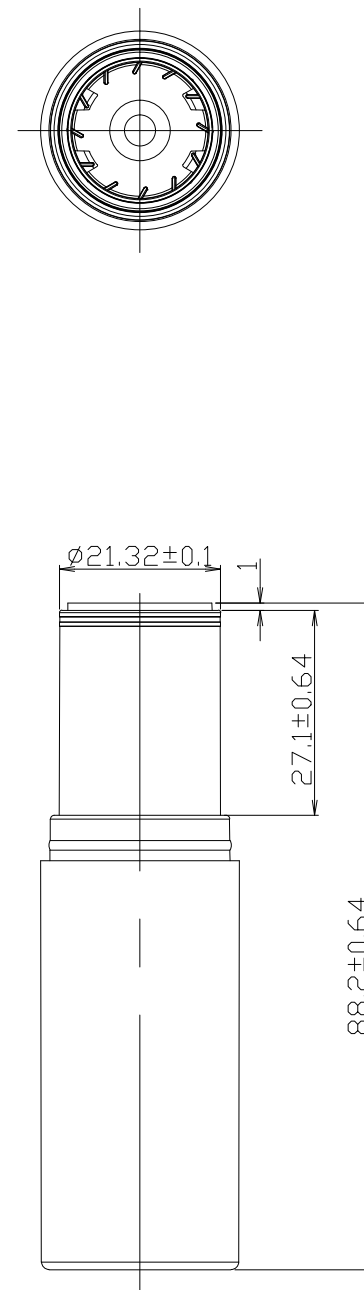
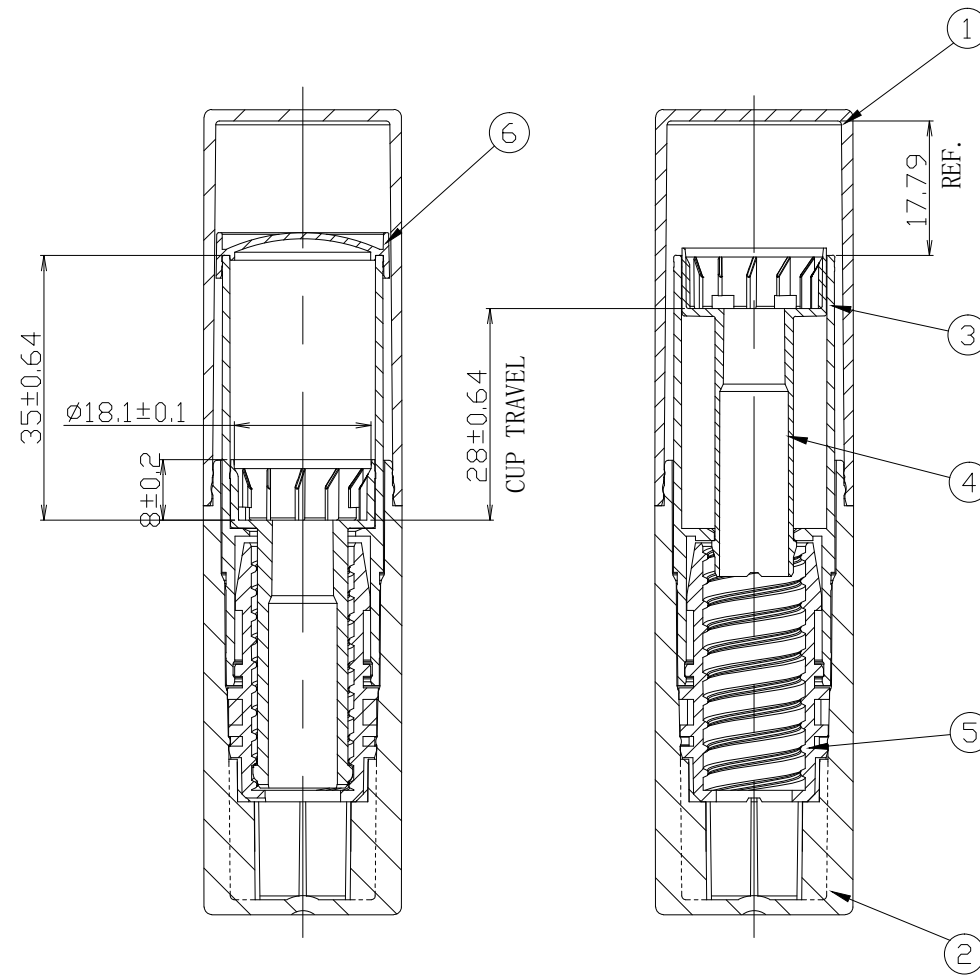
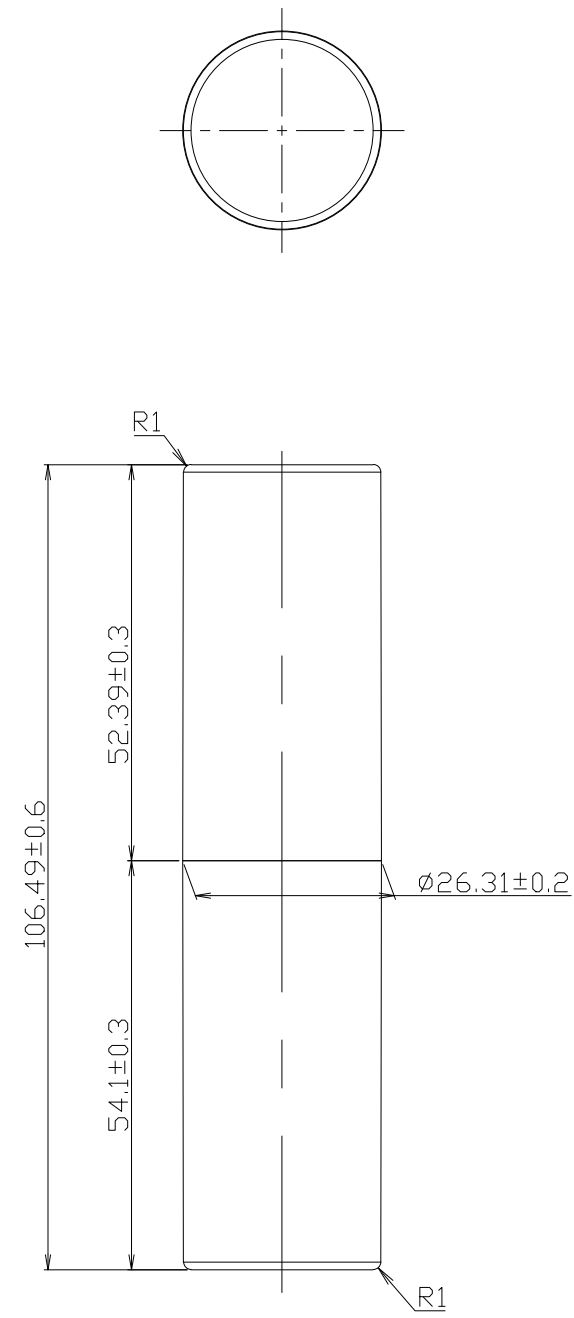



No.	NAME	Material	Drawing No.	weight
1	CAP	ABS	D19049	6.5g
2	BASE	ABS	D19050	13.7g
3	SHELL	PBT	D19051	5.4g
4	CUP	PBT	D19045	2.7g
5	CAM	ABS	D19046	3.5g
6	INNER CAP	PBT	D19052	0.9g

- Notes:
1. Separation force between cap and base 1.0 to 5.5kgf.
  2. Separation force between inner cap and shell 0.3 to 2kgf.
  3. Separation force between mechanism and base  $\geq 5.5$ kgf. TBD
  4. Cup pushback force  $\geq 3.5$ kgf
  5. Mechanism pushback force  $< 12$ kgf TBD
  6. Swivel Torque: 0.5-6 N.cm
  7. Torque test override (up):  $> 10$ N.cm
  8. -0,050Mpa keep 5 minutes color water
  9. Capacity: 9.0ml



4				CUSTOMER					
3				PART	ASSEMBLY				
2				NAME	/	DESIGN	WX	DATE	2019/5/16
1				CODE	PP2020006	CHECKED		APPROVED	
NO.	REVISIONS DESCRIPTION	DRAWN	DATE	SCALE	1: 1	PLATE	A3	MATERIAL	/
*Dim. are adjustable based on functional requirement		TOL.	$\pm 0.2$ mm	UNIT	mm [in]	DRAWING NO.	D19048	REV	00