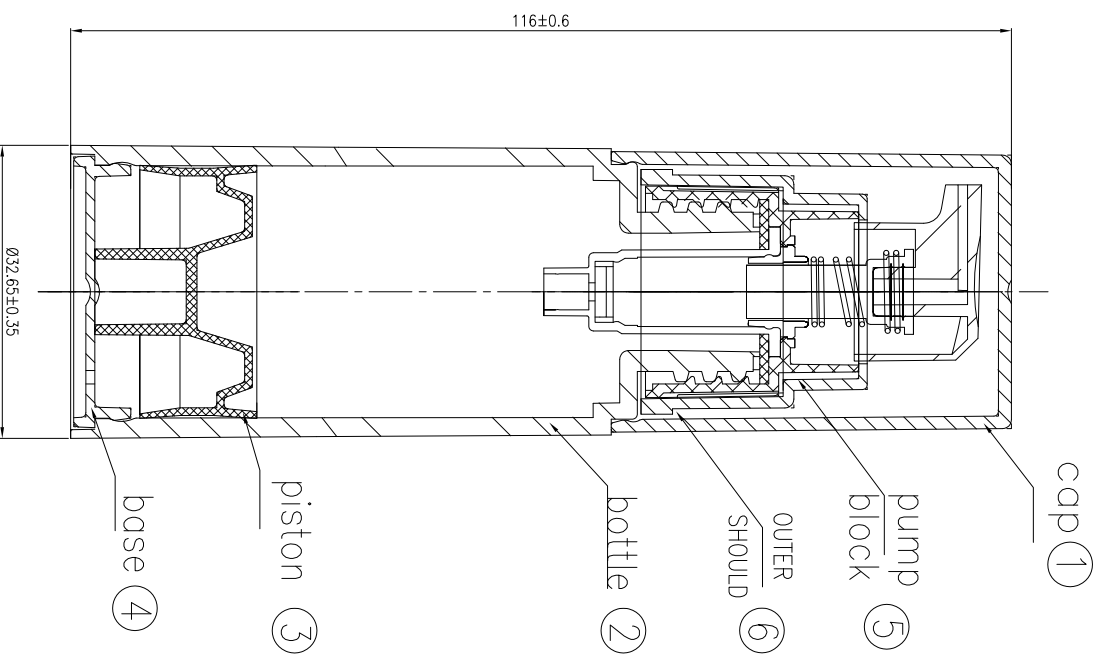


no.	ITEM NAME	MATERIAL	GRADE NO.	MAKER	Weight
①	CAP	ABS			6.6g±0.8g
②	BOTTLE	PP			15.5g±0.8g
③	PISTON	PE			2.2g±0.20g
④	BASE	PP			1.1g±0.15g
⑤	PUMP				
⑥	OUTER SHOULD	ABS			3g±0.25g

ITEM	DESCRIPTION OF REVISION	REVISED BY	DATE
△			



OFC: 34.5 ± 2m1

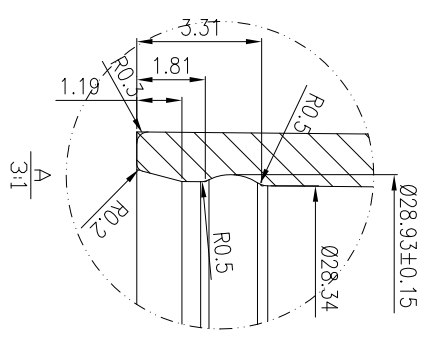
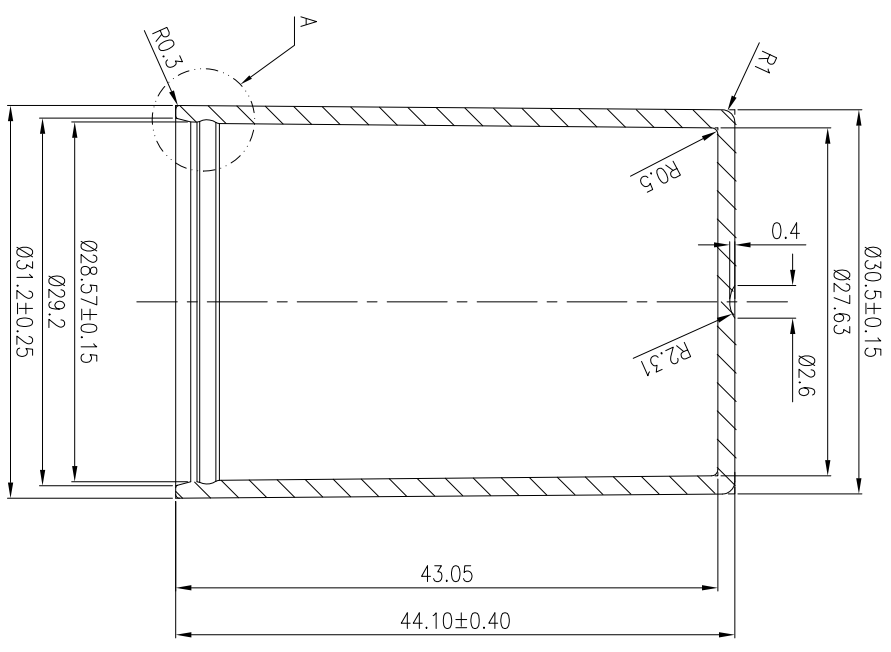


Basic Dimension Area	Max Dimension Tolerance	General Tolerance
0---3	±0.065	±0.15
3---6	±0.09	±0.215
6---10	±0.105	±0.26
10---18	±0.125	±0.31
18---30	±0.15	±0.37
30---50	±0.175	±0.435
50---80	±0.2	±0.5
80---120	±0.25	±0.65
120---180	±0.35	±0.725
180-----	±0.4	±0.9

MAJOR DIM UNIT:MM

Product ID	PA2020006-30ml	DESIGN	ZLC	CHECK		APPROVE	
PRODUCT NAME	30ml PP BOTTLE - assembly	DATE	2018.3.18	SCALE	2:1	PROJECTION	
MATERIAL	SEE BOM	WEIGHT	SEE BOM	CAPACITY		DWG NO.	Q

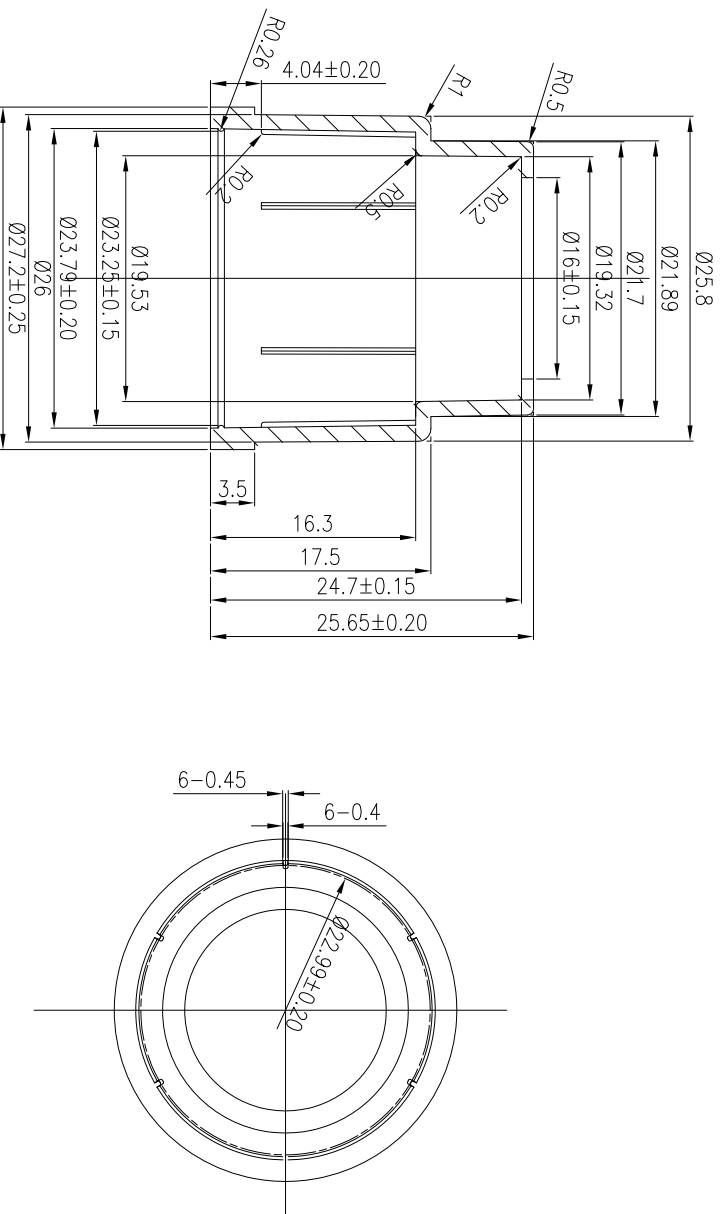
ITEM	DESCRIPTION OF REVISION	REVISED BY	DATE
△			



Basic Dimension Area	Upper Dimension Tolerance	General Tolerance	Product ID	DESIGN	CHECK	APPROVE
0-----3	±0.065	±0.15	PA2020006-30ml	ZLC		
3-----6	±0.09	±0.215				
6-----10	±0.105	±0.26				
10-----18	±0.125	±0.31				
18-----30	±0.15	±0.37				
30-----50	±0.175	±0.435				
50-----80	±0.2	±0.5	Product Name	DATE	SCALE	PROJECTION
80-----120	±0.25	±0.65	30ml PP Bottle-Cap	2018.3.18	2:1	
120-----180	±0.35	±0.725	MATERIAL	WEIGHT	CAPACITY	DWG NO.
180-----	±0.4	±0.9	ABS	6.6g±0.8g		
<input type="checkbox"/> MAJOR DIM UNIT:MM						Q

R618

ITEM	DESCRIPTION OF REVISION	REVISED BY	DATE
△			



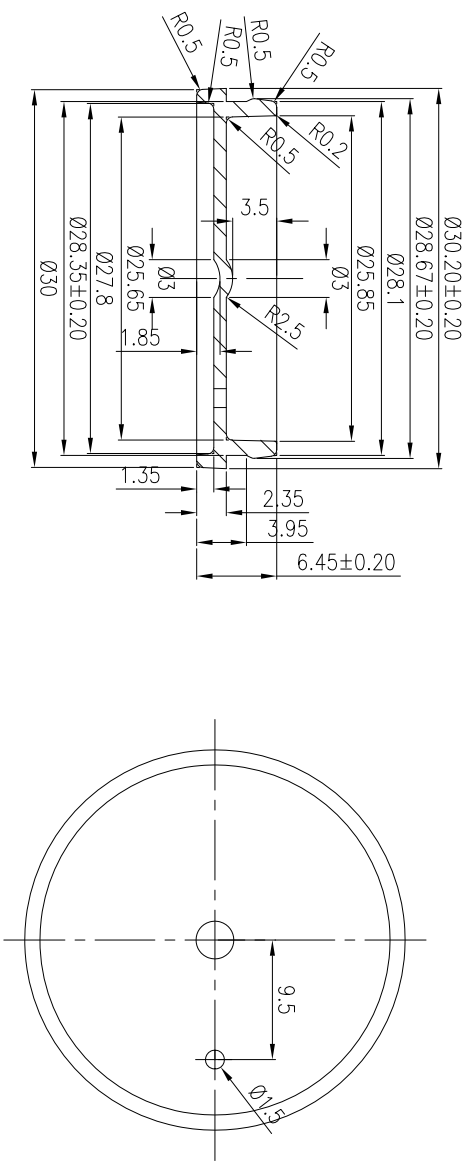
R616

Basic Dimension Area	Upper Dimension Tolerance	General Tolerance
0-----3	± 0.065	± 0.15
3-----6	± 0.09	± 0.215
6-----10	± 0.105	± 0.26
10-----18	± 0.125	± 0.31
18-----30	± 0.15	± 0.37
30-----50	± 0.175	± 0.435
50-----80	± 0.2	± 0.5
80-----120	± 0.25	± 0.65
120-----180	± 0.35	± 0.725
180-----	± 0.4	± 0.9

<input type="checkbox"/> MAJOR DIM	UNIT:MM
------------------------------------	---------


Product ID	PA2020006-30ml	DESIGN	ZLC	CHECK		APPROVE	
PRODUCT NAME	30ml PP BOTTLE -outer should	DATE	2018.3.18	SCALE	2:1	PROJECTION	
MATERIAL	ABS	WEIGHT	3g \pm 0.25g	CAPACITY		DWG NO.	Q

ITEM	DESCRIPTION OF REVISION	REVISED BY	DATE
△			

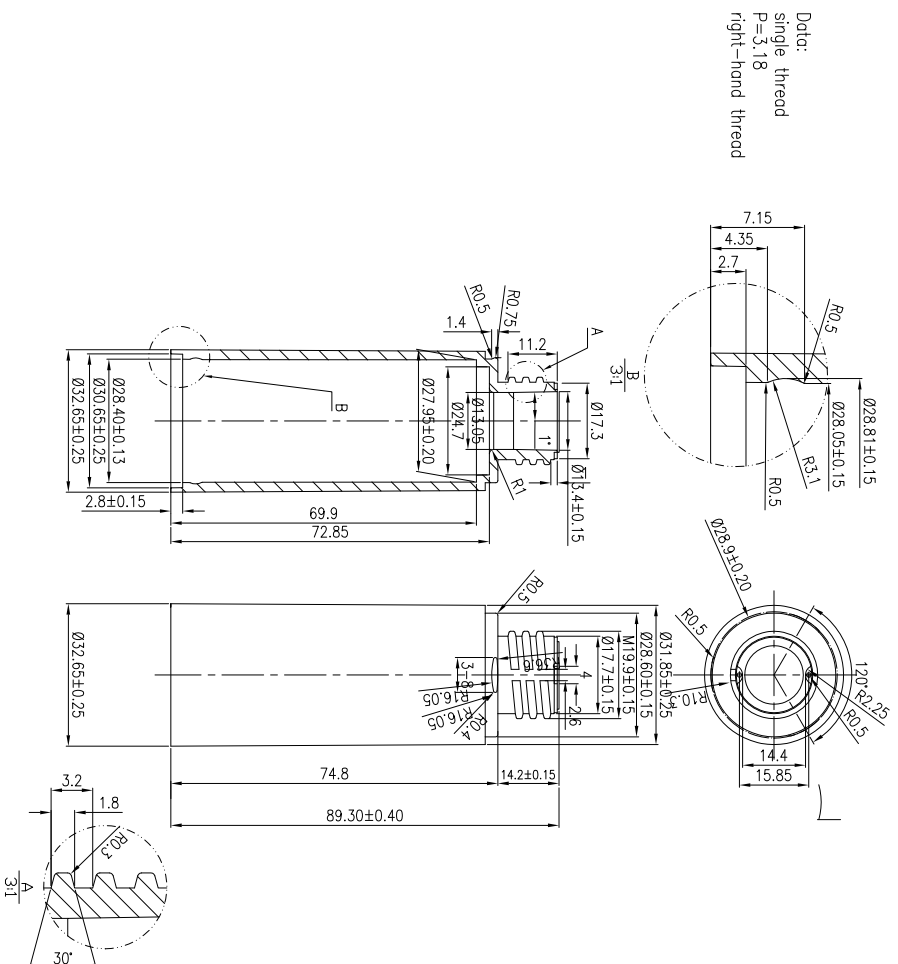


R619

Basic Dimension Area	Upper Dimension Tolerance	General Tolerance
0-----3	±0.065	±0.15
3-----6	±0.09	±0.215
6-----10	±0.105	±0.26
10-----18	±0.125	±0.31
18-----30	±0.15	±0.37
30-----50	±0.175	±0.435
50-----80	±0.2	±0.5
80-----120	±0.25	±0.65
120-----180	±0.35	±0.725
180-----	±0.4	±0.9

 Element packaging		Product ID	PA20200006-30ml	DESIGN	ZLC	CHECK		APPROVE	
PRODUCT NAME	30ml PP BOTTLE -base	DATE	2018.3.18	SCALE	2:1	PROJECTION			
MATERIAL	PP	WEIGHT	1.1g±0.15g	CAPACITY					
MAJOR DIM	UNIT:MM							DWG NO.	Q

ITEM	DESCRIPTION OF REVISION	REVISED BY	DATE
△			



Dot:
 single thread
 $P = 3.18$
 right-hand thread

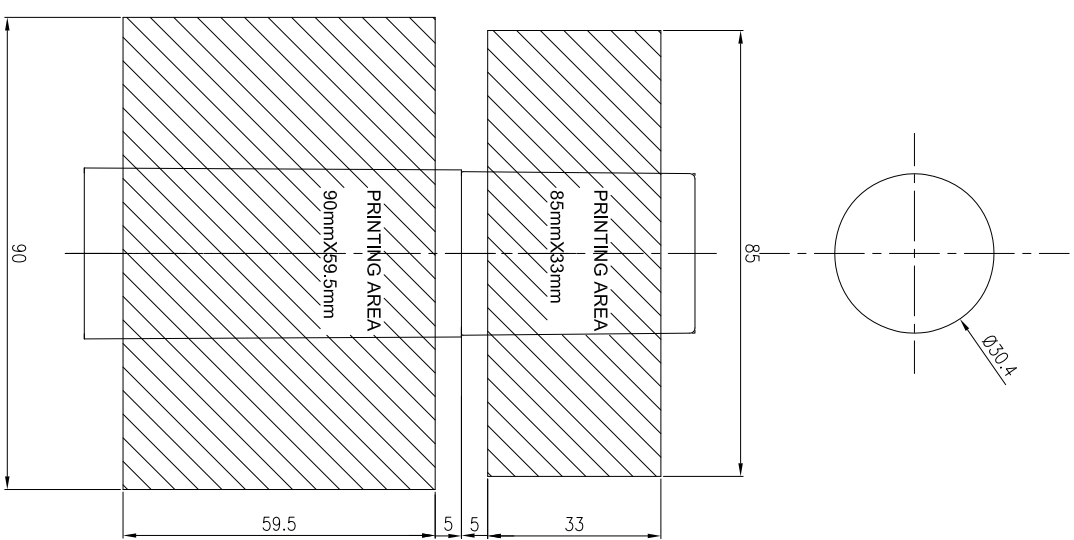
R621

Basic Dimension Area	Upper Dimension Tolerance	General Tolerance
0-----3	± 0.065	± 0.15
3-----6	± 0.09	± 0.215
6-----10	± 0.105	± 0.26
10-----18	± 0.125	± 0.31
18-----30	± 0.15	± 0.37
30-----50	± 0.175	± 0.435
50-----80	± 0.2	± 0.5
80-----120	± 0.25	± 0.65
120-----180	± 0.35	± 0.725
180-----	± 0.4	± 0.9

Product ID		Product NAME		MATERIAL	
PA2020006-30ml		30ml PP BOTTLE -BOTTLE		PP	
DESIGN	DATE	SCALE	PROJECTION		
ZLC	2018.3.18	1:1			
CHECK					
WEIGHT	CAPACITY	APPROVE		DWG NO.	
15.5g \pm 0.8g				Q	



ITEM	DESCRIPTION OF REVISION	REVISED BY	DATE
△			



Basic Dimension Area	Upper Dimension Tolerance	General Tolerance
0-----3	±0.065	±0.15
3-----6	±0.09	±0.215
6-----10	±0.105	±0.26
10-----18	±0.125	±0.31
18-----30	±0.15	±0.37
30-----50	±0.175	±0.435
50-----80	±0.2	±0.5
80-----120	±0.25	±0.65
120-----180	±0.35	±0.725
180-----	±0.4	±0.9

Product ID	PA2020006-30ml
PRODUCT NAME	H7004 30ml PP BOTTLE -PRINTING AREA
MATERIAL	SEE BOM
DESIGN	ZLC
DATE	2018.3.18
WEIGHT	SEE BOM
SCALE	SCALE
CAPACITY	1:1
APPROVE	
PROJECTION	
DWG NO.	Q

MAJOR DIM UNIT:MM