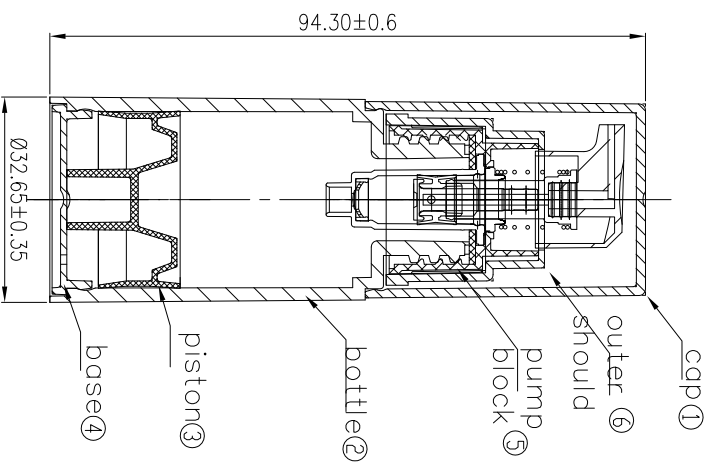


no.	ITEM NAME	MATERIAL	GRADE NO.	MAKER	Weight
①	CAP	ABS			6.6±0.8g
②	BOTTLE	PP			11.4±0.4g
③	PISTON	PE			2.2±0.20g
④	BASE	PP			1.1±0.15g
⑤	PUMP				
⑥	OUTER SHOULD	ABS			3±0.25g

ITEM	DESCRIPTION OF REVISION	REVISED BY	DATE
△			



OFC: 21 ± 2ml

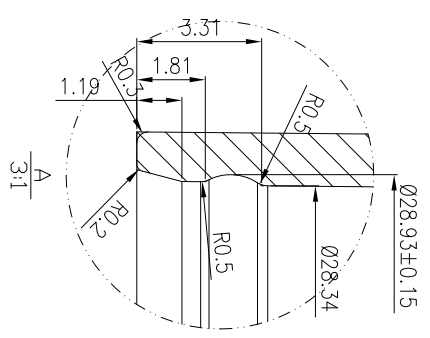
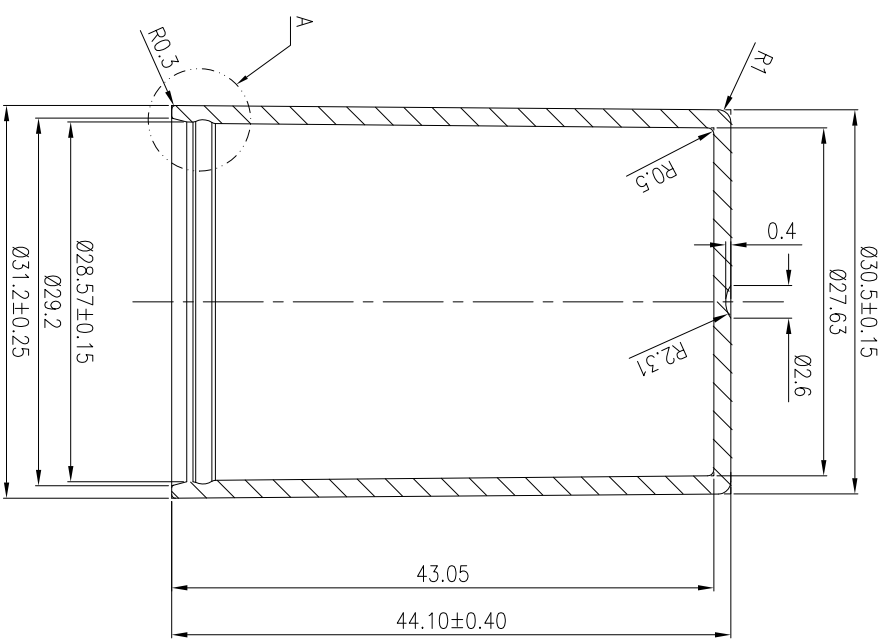


Basic Dimension Area	Max Dimension Tolerance	General Tolerance
0-----3	±0.065	±0.15
3-----6	±0.09	±0.215
6-----10	±0.105	±0.26
10-----18	±0.125	±0.31
18-----30	±0.15	±0.37
30-----50	±0.175	±0.435
50-----80	±0.2	±0.5
80-----120	±0.25	±0.65
120-----180	±0.35	±0.725
180-----	±0.4	±0.9

<input type="checkbox"/>	MAJOR DIM	UNIT:MM
--------------------------	-----------	---------

Product ID	PA2020005-15ml	DESIGN	ZLC	CHECK		APPROVE	
PRODUCT NAME	15ml PP BOTTLE -assembly	DATE	2018.3.18	SCALE	1:1	PROJECTION	
MATERIAL	SEE BOM	WEIGHT	SEE BOM	CAPACITY		DWG NO.	Q

ITEM	DESCRIPTION OF REVISION	REVISED BY	DATE
△			



Basic Dimension Area	Upper Dimension Tolerance	General Tolerance
0-----3	±0.065	±0.15
3-----6	±0.09	±0.215
6-----10	±0.105	±0.26
10-----18	±0.125	±0.31
18-----30	±0.15	±0.37
30-----50	±0.175	±0.435
50-----80	±0.2	±0.5
80-----120	±0.25	±0.65
120-----180	±0.35	±0.725
180-----	±0.4	±0.9

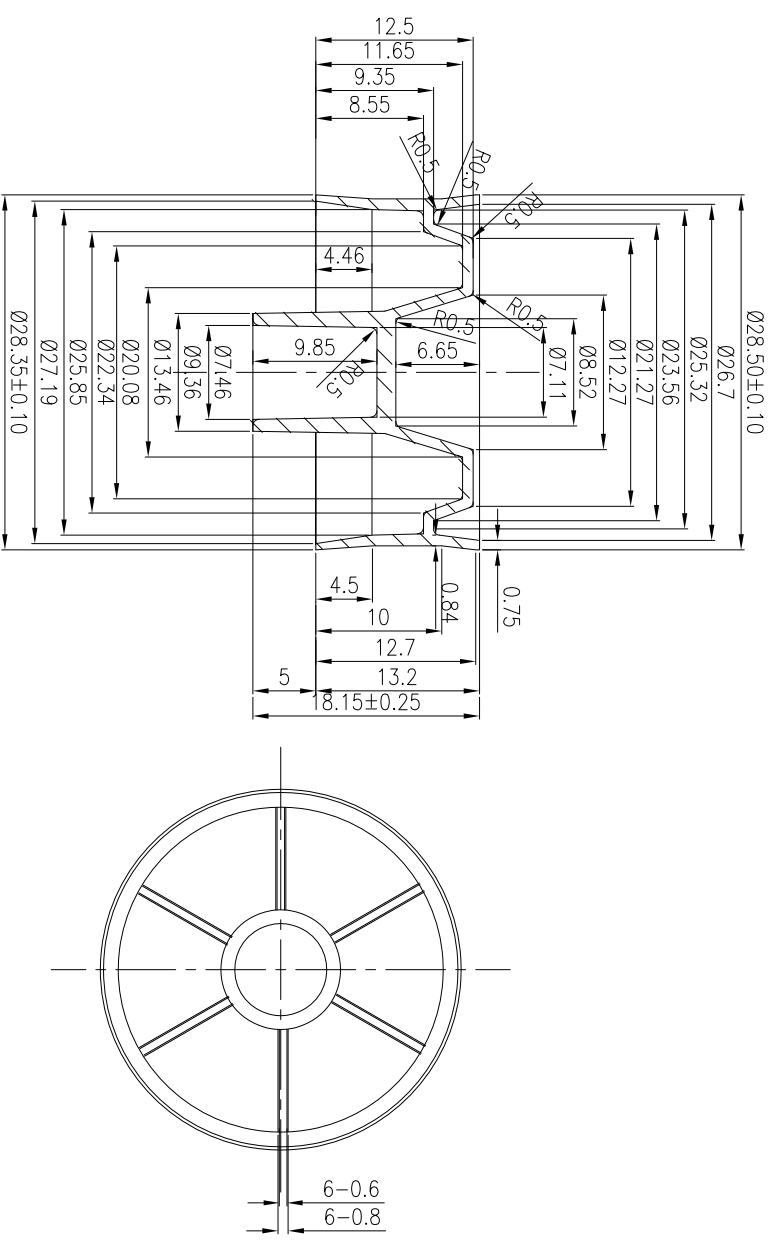
Product ID	PA2020005-15ml	DESIGN	ZLC	CHECK		APPROVE	
PRODUCT NAME	15ml PP Bottle-Cap	DATE	2018.3.18	SCALE	2:1	PROJECTION	
MATERIAL	ABS	WEIGHT	6.6g±0.8g	CAPACITY		DWG NO.	Q



R618

MAJOR DIM UNIT:MM

ITEM	DESCRIPTION OF REVISION	REVISED BY	DATE
△			

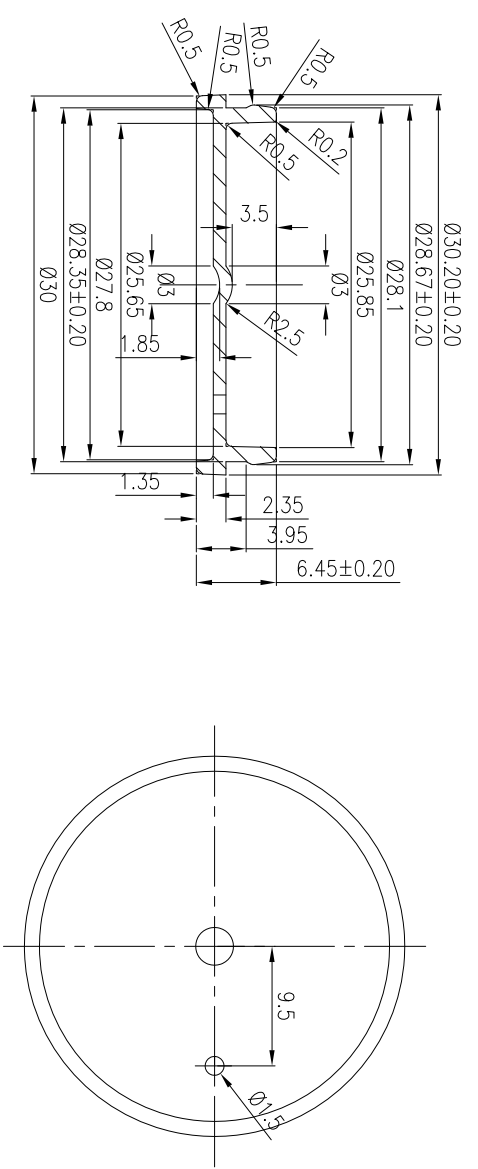


R629

Basic Dimension Area	Upper Dimension Tolerance	General Tolerance
0-----3	±0.065	±0.15
3-----6	±0.09	±0.215
6-----10	±0.105	±0.26
10-----18	±0.125	±0.31
18-----30	±0.15	±0.37
30-----50	±0.175	±0.435
50-----80	±0.2	±0.5
80-----120	±0.25	±0.65
120-----180	±0.35	±0.725
180-----	±0.4	±0.9



 Element packaging		Product ID	PA2020005-15ml	DESIGN	ZLC	CHECK		APPROVE	
PRODUCT NAME	15ml PP BOTTLE -PISTON	DATE	2018.3.18	SCALE	2:1	PROJECTION			
MATERIAL	PE	WEIGHT	2.2g±0.20g	CAPACITY					
MAJOR DIM	UNIT:MM								Q

ITEM	DESCRIPTION OF REVISION	REVISED BY	DATE
△			



R619

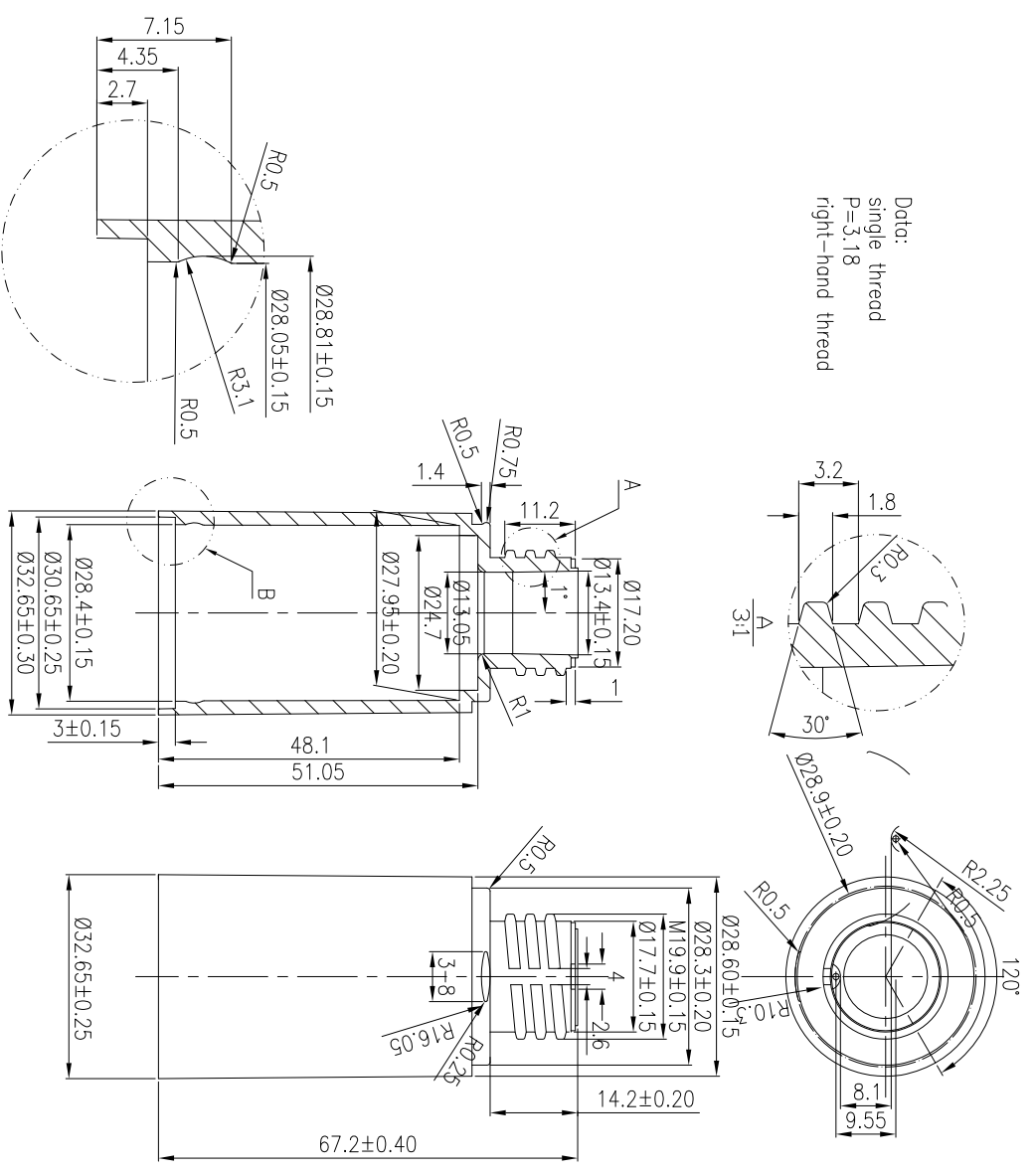
Basic Dimension Area	Upper Dimension Tolerance	General Tolerance
0-----3	±0.065	±0.15
3-----6	±0.09	±0.215
6-----10	±0.105	±0.26
10-----18	±0.125	±0.31
18-----30	±0.15	±0.37
30-----50	±0.175	±0.435
50-----80	±0.2	±0.5
80-----120	±0.25	±0.65
120-----180	±0.35	±0.725
180-----	±0.4	±0.9

 Element packaging		Product ID	PA20200005-15ml	DESIGN	ZLC	CHECK		APPROVE	
		PRODUCT NAME	15ml PP BOTTLE –base	DATE	2018.3.18	SCALE	2:1	PROJECTION	
MATERIAL	PP	WEIGHT	1.1g±0.15g	CAPACITY		DWG NO.	Q		

MAJOR DIM UNIT:MM

ITEM	DESCRIPTION OF REVISION	REVISED BY	DATE
△			

Data:
 single thread
 P=3.18
 right-hand thread

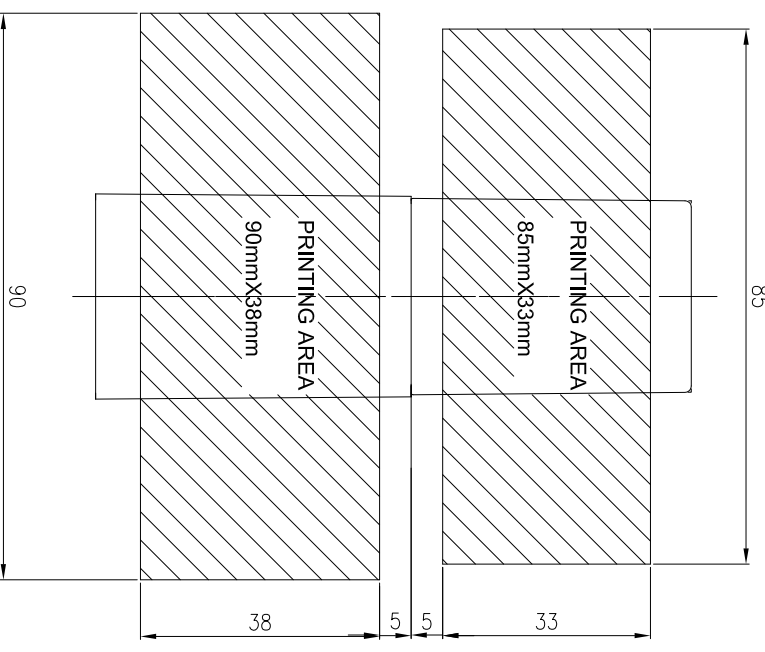
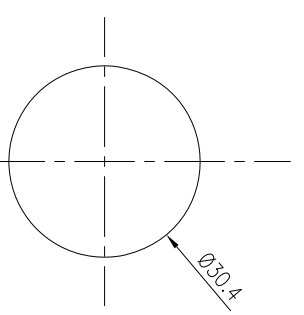


Basic Dimension Area	Upper Dimension Tolerance	General Tolerance
0-----3	±0.065	±0.15
3-----6	±0.09	±0.215
6-----10	±0.105	±0.26
10-----18	±0.125	±0.31
18-----30	±0.15	±0.37
30-----50	±0.175	±0.435
50-----80	±0.2	±0.5
80-----120	±0.25	±0.65
120-----180	±0.35	±0.725
180-----	±0.4	±0.9




Product ID	PA2020005-15ml	DESIGN	ZLC	CHECK		APPROVE	
PRODUCT NAME	15ml PP BOTTLE -BOTTLE	DATE	2018.3.18	SCALE	1:1	PROJECTION	
MATERIAL	PP	WEIGHT	11.4g±0.4g	CAPACITY		DWG NO.	Q

R620

ITEM	DESCRIPTION OF REVISION	REVISED BY	DATE
△			



Basic Dimension Area	Major Dimension Tolerance	General Tolerance
0-----3	±0.065	±0.15
3-----6	±0.09	±0.215
6-----10	±0.105	±0.26
10-----18	±0.125	±0.31
18-----30	±0.15	±0.37
30-----50	±0.175	±0.435
50-----80	±0.2	±0.5
80-----120	±0.25	±0.65
120-----180	±0.35	±0.725
180-----	±0.4	±0.9

 Element packaging		Product ID	PA2020005-15ml	DESIGN	ZLC	CHECK		APPROVE	
PRODUCT NAME	H7003 15ml PP BOTTLE -PRINTING AREA	DATE	2018.3.18	SCALE	1:1	PROJECTION	 		
MATERIAL	SEE BOM	WEIGHT	SEE BOM	CAPACITY		DWG NO.	Q		

MAJOR DIM UNIT:MM